

NEXT GEN NOW

KIOXIA

PCIe® 4.0 SSDs are
Here Today

THROUGHPUT PERFORMANCE

(128KiB; QD=32)

PCIe® 3.0
CM5 Series 3.35 GB/s

PCIe® 4.0
CM6 Series

6.90 GB/s

Over **2x**
Improvement

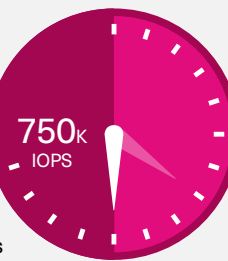
IOPS PERFORMANCE

(4kiB; QD=256 Random Read)

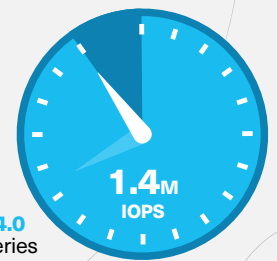
87%

More IOPS than PCIe® 3.0

PCIe® 3.0
CM5 Series



PCIe® 4.0
CM6 Series



LATENCY COMPARISON

67%

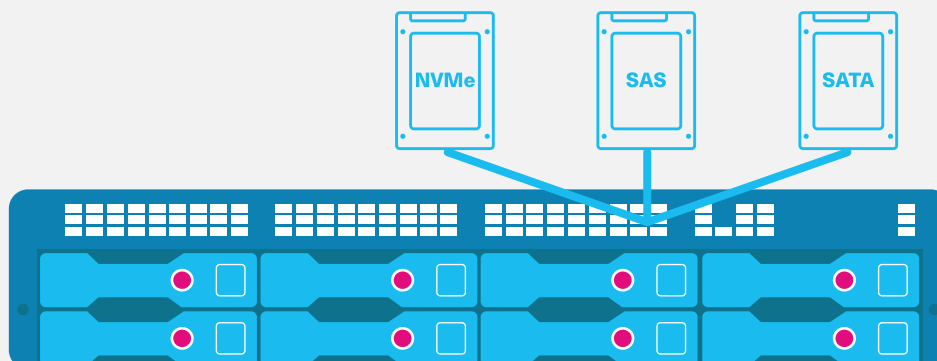
Lower Write
Latency
Lower is better

30 μ s

10 μ s

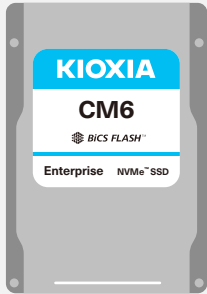
■ PCIe® 3.0
CM5 Series
■ PCIe® 4.0
CM6 Series

SFF-TA-1001 COMPLIANT (U.3)

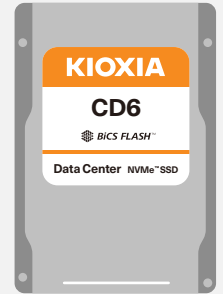


- Universal Backplane Management (SFF-TA-1005)
- Works with Tri-mode controllers
- Allows NVMe™, SAS and SATA drive connectivity in the same drive slot
- Reduces customer cost and complexity

KIOXIA PCIe® 4.0 SSDs



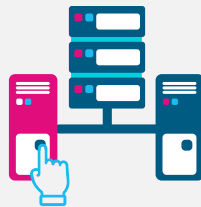
CM6 Series
Enterprise NVMe™ SSD



CD6 Series
Data Center NVMe™ SSD

Traditional enterprise servers and storage

User Cases



Hyperscale, cloud and general purpose server

Up to
6.9GB/s
1.4M IOPS

Performance



Up to
6.2GB/s
1.0M IOPS

Up to
30.72TB

Capacities



Up to
15.36TB

ENCRYPTION & SECURITY FEATURES

- **SIE**
Sanitize Instant Erase
- **SED**
Self-Encrypting Drive
- **FIPS**
Designed to comply with FIPS 140-2 Level 2



For performance measurements, read and write speeds may vary depending on the host device, read and write conditions and file size.

© 2020 KIOXIA America, Inc. All rights reserved. Information in this document, including product pricing and specifications, content of services, and contact information is current and believed to be accurate on the date of the announcement, but is subject to change without prior notice. Technical and application information contained here is subject to the most recent applicable KIOXIA product specifications. PCI Express and PCIe are registered trademarks of PCI-SIG. NVMe is a registered trademark of NVM Express, Inc.

KIOXIA